

Technical Service Bulletin

July 29, 2022

RSP-1576 - Version 1.54 Software Release

The software has been updated to include bug fixes and improvements as listed below.

Please note that all future upgrades are ONLY available via USB flash drive upgrade. For instruction, please refer to <ROTEL Software Online Upgrading Information> on www.rotel.com.

Release Type		
Maintenance	Major	Critical

Software Information	
New Version	V1.54
Previous Version	V1.53

Serial Number (Change will be effective in units after the serial numbers listed below.)	
Black	235-908-1200
Silver	735-838-1100

Release Notes
<ul style="list-style-type: none">• Fixed a bug with no 4K video output on some models of JVC and Optoma projectors.• Fixed a bug where the unit did not save the change when changing OSD resolution from 480p to 576p in the setup menu.• Other minor bug fixes.

For more information or questions please contact your customer service representative.

-- End --

Technical Service Bulletin

July 29, 2022

RSP-1576 - Version 1.53 Software Release

The software has been updated to include bug fixes and improvements as listed below.

Please note that all future upgrades are ONLY available via USB flash drive upgrade. For instruction, please refer to <ROTEL Software Online Upgrading Information> on www.rotel.com.

Release Type		
Maintenance	Major	Critical

Software Information	
New Version	V1.53
Previous Version	V1.52

Serial Number (Change will be effective in units after the serial numbers listed below.)	
Black	235-908-1200
Silver	735-838-1100

Release Notes
<ul style="list-style-type: none">• Fixed a bug where 12V trigger out output 12V signal twice after entering Standby mode.• Other minor bug fixes.

For more information or questions please contact your customer service representative.

-- End --

Technical Service Bulletin

Dec 18, 2020

RSP-1576 - Version 1.52 Software Release

The RSP-1576 software has been updated to include bug fixes and improvements as listed below.

Release Type		
Maintenance	Major	Critical

Software Information	
New Version	V1.52
Previous Version	V1.51

Serial Number (Change will be effective in units after the serial numbers listed below.)	
Black	235-908-1200
Silver	735-838-1100

Release Notes
<ul style="list-style-type: none">• Fixed a bug where overly saturated colour occurred on the display when processing HDR content from a SIM2 projector.• Fixed a bug where there was a chance that the software update stuck at "DSP Update 99%".• Other minor bug fixes.

For more information or questions please contact your customer service representative.

-- End --



Technical Service Bulletin

Dec 4, 2019

RSP-1576 - Version 1.51 Software Release

The RSP-1576 software has been updated to Version 1.51. This release includes bug fixes and improvements as listed below.

Release Type		
Maintenance	Major	Critical

Software Information	
New Version	V1.51
Previous Version	V1.50

Serial Number (Change will be effective in units after the serial numbers listed below.)	
Black	235-908-1200
Silver	735-838-1100

Release Notes
<ul style="list-style-type: none">• Eliminated audio stuttered and hiccup sound when pausing/stopping music playback or disconnecting / reconnecting a network cable under some audio modes.
<ul style="list-style-type: none">• Improved the layout of DISP menu for better user operation.
<ul style="list-style-type: none">• Improved the on-screen display messages during the Software Upgrade process.
<ul style="list-style-type: none">• Fixed a bug where on-screen DISP menu does not show when the unit is in mute mode.
<ul style="list-style-type: none">• Fixed a bug where IP communication slows down after selecting the USB input.
<ul style="list-style-type: none">• Fixed a bug where unit becomes non-responsive after multiple hours of USB audio playback.
<ul style="list-style-type: none">• Fixed a bug where speaker outputs go very high at the first-second playback of Dolby 7.1.4 content when the Subwoofer speaker = NO in a 5.1 or above audio configuration.
<ul style="list-style-type: none">• Fixed bugs of channel output mapping errors occur when applying some audio or speaker settings.
<ul style="list-style-type: none">• Fixed bugs where sound reproduction errors occur when applying some speaker settings.
<ul style="list-style-type: none">• Fixed bugs where output level errors occur when applying some surround mode settings.

For more information or questions please contact your customer service representative.

-- End --



Technical Service Bulletin

March 28, 2019

RSP-1576 - Version 1.50 Software Release - UPDATED

The RSP-1576 software has been updated to Version 1.50. This release includes improved support for PEQ setup and configuration allowing all 10 PEQ bands to be adjusted to any frequency from 10Hz to 24kHz for improved installation flexibility. Added SIGNAL SENSE AUTO functions for improved automatic signal sense power on. Other bug fixes and improvements are also included. Release details are listed below.

Note: To successfully update from version 1.35 (or older) to version 1.47 (or newer), the unit must be updated 2 times via the front USB using the same version 1.47 (or newer) software.

Note: As this release includes key feature updates and changes to the PEQ it is highly recommended to RESET FACTORY DEFAULTS after this update. Please make note of all unit configuration settings before initiating the factory reset.

Release Type		
Maintenance	Major	Critical

Software Information	
New Version	V1.50
Previous Version	V1.47

Serial Number (Change will be effective in units after the serial numbers listed below.)	
Black	235-838-1100
Silver	735-838-1100

Release Notes
<ul style="list-style-type: none"> ● NOTICE: In some regions the NETWORK WAKEUP function will not be available due to the limitation of Standby Power Consumption. To control the Rotel product use the RS232 connection.
<ul style="list-style-type: none"> ● Allowed all 10 bands of PEQ to be set to any frequency 10Hz – 24kHz for improved room correction.
<ul style="list-style-type: none"> ● Fixed a few translation errors in the setup menu.
<ul style="list-style-type: none"> ● Corrected display inconsistency between VFD and OSD Pop Menu for OFF TIMER set up menu in multiple languages.
<ul style="list-style-type: none"> ● Fixed a bug where the Default Mode of the DSP configured in INPUT SETUP menu was not retained by the system after entering standby.
<ul style="list-style-type: none"> ● Updated the input source name list with few text corrections and the addition of new items, including "APPLE TV" "APPLE TV 2" "ROKU" "CHROMECAST".
<ul style="list-style-type: none"> ● Corrected display inconsistency between VFD display menu and OSD DISP menu.

-- Continued --

<ul style="list-style-type: none">• Corrected network IP address mismatch memory error after switching between DHCP and STATIC mode.
<ul style="list-style-type: none">• Allowed the user to update the unit to the same software version via the NETWORK.
<ul style="list-style-type: none">• Added idle OFF TIMER warning message to display. The system will display a blinking remaining-time message three times in the last three minutes, each for 5 seconds, and will display a static warning message in the last ten second.
<ul style="list-style-type: none">• Changed the available setting options of SIGNAL SENSE from Coax 1~3 and Optical 1~3 to VIDEO1~8 and BT to better support the implementation of SIGNAL SENSE AUTO.
<ul style="list-style-type: none">• Implemented SIGNAL SENSE AUTO function. When SIGNAL SENSE is enabled but the last listening source was not the configured Signal Sense source and the user puts the unit into STANDBY mode, SIGNAL SENSE still monitors the status of the configured source for audio and powers on when audio is present. For example, VIDEO3 was configured as the SIGNAL SENSE source. The user is listening to VIDEO1 source then puts the unit into STANDBY mode with remote control. The unit begins to monitor the audio input configured for VIDEO3 and will wake up the unit and switch to the VIDEO3 input when an audio signal is detected. If the remote control is used to power on the unit then the previous input selection is active as in the example above the unit have VIDEO1 as the input. If there is audio playing on the configured SIGNAL SENSE input when the unit is put into STANDBY the audio must stop for 10 minutes before SIGNAL SENSE power on is available.
<ul style="list-style-type: none">• Improved software updated speed by eliminating writing the same software version to the DSP and HDMI.
<ul style="list-style-type: none">• Improved software update status on display.
<ul style="list-style-type: none">• Improved the robustness of iPod connection to eliminate connection lost error.
<ul style="list-style-type: none">• Other improvements and enhancements to audio and video processing.

For more information or questions please contact your customer service representative.

-- End --

Technical Service Bulletin - #180524

May 24, 2018

RSP-1576 - Version 1.47 Software Release

The RSP-1576 software has been updated to Version 1.47. This release includes improved support for HDR and ARC functions as well as other bug fixes and improvements. Release details are listed below.

Note: To successfully update from version 1.35 (or older) to version 1.47 (or newer), the unit must be updated 2 times via the front USB using the same version 1.47 (or newer) software.

Release Type

Maintenance	Major	Critical
-------------	-------	----------

Software Information

New Version	V1.47
Previous Version	V1.35

Serial Number (Change will be effective in units starting with the serial numbers listed below.)

Black	235-742-1001
Silver	735-742-1001

Release Notes

- **NOTICE:** To ensure compliance with local power consumption regulations the NETWORK STANDBY function has been removed from the RSP-1576 Software Version V1.47. RS232 communications remain active and provides full control for integration with automation systems.
- Improved HDMI handshake process to support “Dolby ATMOS for Theater” audio device mode in XBOX ONE X and XBOX ONE S.
Note: Require installation and configuration of the Dolby ATMOS driver on XBOX One X and XBOX ONE S.
- Fixed a bug where pre-output or TV speaker output would be lost when switching the source from HDMI OUT(ARC/OSD) to any other HDMI input.
- Improved HDMI handshake process to fix no ARC function with some 4K HDR TV displays (e.g., LG65UJ750V, LG55UJ7588).
- Fixed a bug when “VIDEO STANDBY SOURCE” setting was enabled, Bluetooth indicator is blinking after putting unit in standby mode.
- Fix a bug when DISPLAY setting was set as “VFD ONLY” or “OFF”, a display error occurs in OSD menu after a cold reboot.
- Fix a bug when SUBWOOFER was set to “NO” in the SPEAKER CONFIGURATION menu, distortion can be heard as music is streaming to any inputs with surround mode available.

-- Continued --

- Fix a bug when using Apple TV 4K as a source device, exiting from OSD menu would cut off both audio and video outputs.
- Fixed a bug where menu icons mismatch occurs when exiting the Main Menu after scrolling to the bottom menu item and then entering the menu again.
- Fixed a bug where the LFE track is lost when SUBWOOFER and CENTER was set to “NONE” in SPEAKER CONFIGURATION menu.
- Fixed a bug where there was no audio output when streaming Dolby or DTS video content in STANDBY VIDEO PASS-THROUGH mode.

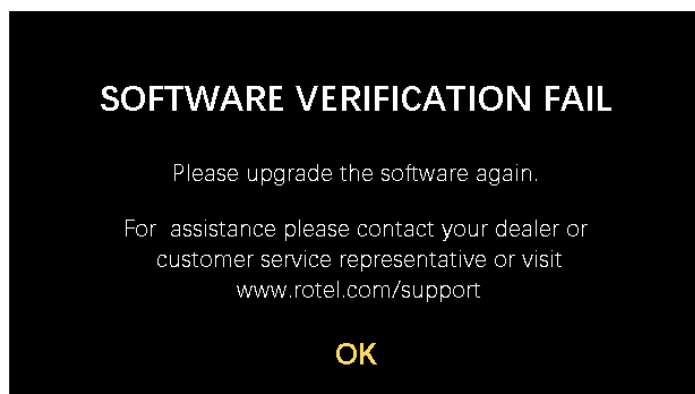
- Updated new DSP firmware version to 1.9.87 with improved feature listed below:
 - Reduced start-up time.
 - Allowed the DSP firmware to be updated via front USB.

Note: To successfully upgrade from Main V1.35 (or older) to Main V1.37 (or newer) the unit must be upgraded 2 times via the front USB using the same V1.37 (or newer) software. Below shows the first and second upgrade results.

1st time: Version 1.35 (or older) to version 1.37 (or newer). Software Information will show DSP software version as V0.0.0.

2nd time: Version 1.37 (or newer) to version 1.37 (or newer). Software Information will show DSP V1.9.87 (or newer).

- Added a software version check during power on and display a message if the software is invalid. The message below will be displayed on HDMI OSD if any software versions are not valid.



- Changed the default value of AUTO POWER DOWN timer from “DISABLE” to “20 MINS” to meet latest EU power regulation.
- Reduced the audio output delay when switching to Dolby TrueHD.
- Reduced the audio and video output delay at power on and when switching source inputs for all audio configurations and all audio formats.

For more information or questions please contact your customer service representative.

-- End --